

Havelock Road Wimbledon, SW19 8HE

£925,000 Freehold

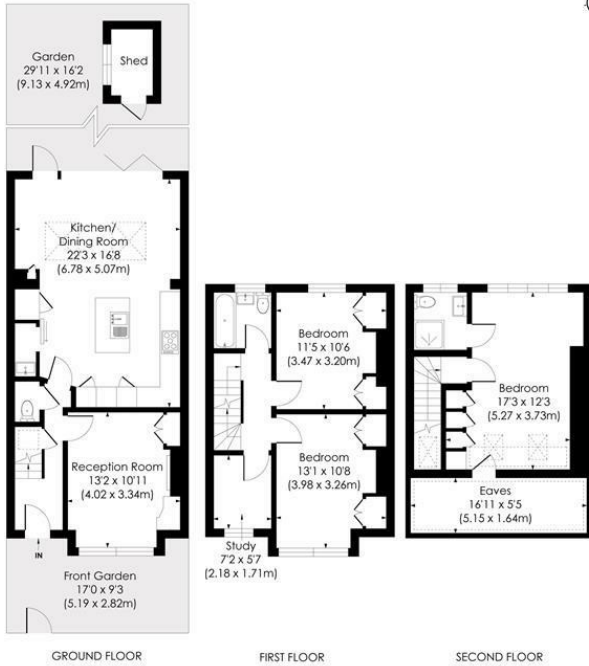


A stunning example of a fully extended Victorian family home located in the highly desirable Poets area of Wimbledon. This spacious 1352 sq ft terraced property has been tastefully updated by the current owners and is in an excellent condition throughout, comprising a separate reception room with functioning feature fireplace, a downstairs w/c and utility room alongside a superb open-plan kitchen/dining area with underfloor heating and bi-fold doors opening out onto the garden. Upstairs there are two double bedrooms, a study and a well appointed family bathroom on the first floor, with the master bedroom and ensuite in the converted loft boasting copious amounts of storage. Being located close to Wimbledon, Thameslink and Northern Line stations as well as excellent local schools and parks an early viewing is therefore recommended.

HAVELOCK ROAD, SW19

Approx. Gross Internal Floor Area

1352 Sq. ft/125.57 Sq. m
(Including Eaves)

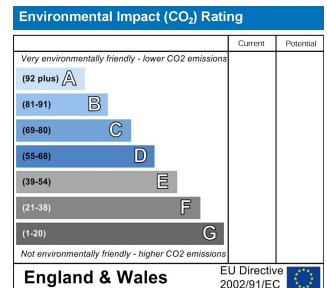
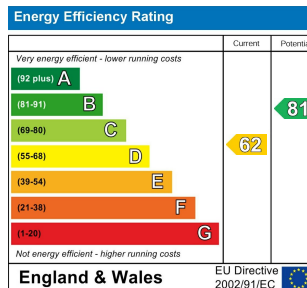


© Pixangle Property Marketing Ltd. info@pixangle.com Tel: 0208 870 2118



This floor plan has been prepared for the purpose of illustration only in accordance with the latest RICS code of measuring practice and is not to scale. All measurements and areas are approximate and whilst every effort has been made to ensure the accuracy of the plan contained here, no responsibility is taken for any error, omission or misstatement.

- Fully Extended Victorian Terraced House
- Excellent Condition
- Four Bedrooms
- Downstairs W/C and Utility Room
- Superb Open-Plan Ground Floor Extension
- Desirable Tree-Lined Street in the "Poets Area"
- Close to Excellent Schools
- Walking Distance to Numerous Transport Links
- EPC Rating D - Council Tax Band E



For Free Mortgage Quote and Best Mortgage Rates, call an Ellisons Mortgage Advisor on 020 8944 9494



Although these particulars are believed to be correct, their accuracy is not guaranteed and they do not form part of any contract.

Celebrating 30 years of successful Sales and Lettings in Merton

